

Most Complete.
Good as

Nu

Convenience
without compromise.

Description

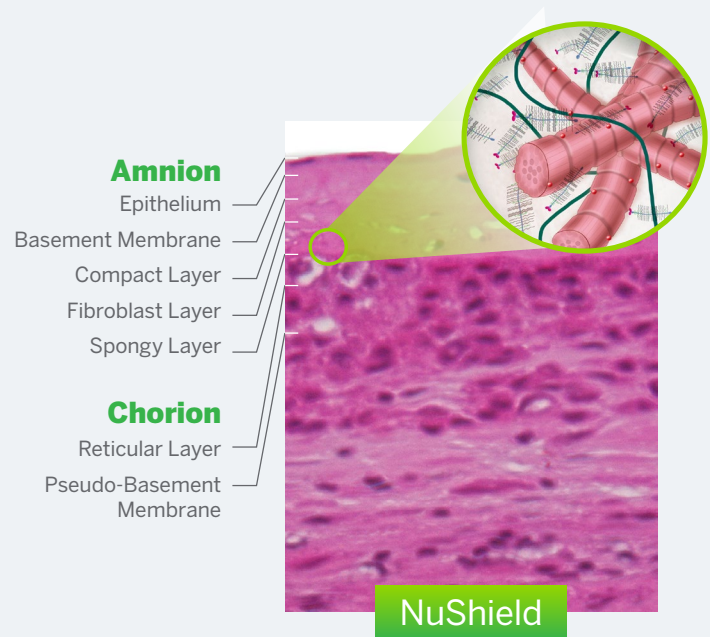
NuShield is the most complete dehydrated placental allograft wound covering on the market.^{1,2}

The LayerLoc™ Process

NuShield undergoes a novel preservation method, known as LayerLoc™, which retains all native layers of the placental membrane, including the amnion and chorion with the spongy layer intact, unlike many placental allografts on the market.

This allows the product to retain numerous growth factors and cytokines.

In addition, LayerLoc provides a final product that is convenient to use and can be stored at room temperature for up to 5 years.^{3,4}



Composition

NuShield contains 640 proteins, including numerous growth factors and cytokines.^{1,5}

An analytical study has shown that the spongy layer in NuShield preserves hyaluronic acid (HA), transforming growth factor beta 1 (TGF- β 1), hepatocyte growth factor (HGF), and Interleukin-1 receptor antagonist (IL-1ra).^{1,7*}

* The clinical activity of these factors has not been demonstrated in NuShield

Organogenesis

NuShield®

Sterilized, Dehydrated Placental Allograft

Intended Use⁴

NuShield may be used as a protective wound covering in a variety of partial- and full-thickness acute and chronic wounds.*

- Trauma wounds
- Pressure injuries
- Diabetic foot ulcers (DFUs)
- Dehisced wounds
- Venous leg ulcers (VLUs)
- Wounds with exposed bone/tendon

Can be applied from the onset and for the duration of the wound, weekly or at the discretion of the health care practitioner.†

*Please refer to your local coverage determination (LCD) guidelines for specific coverage.

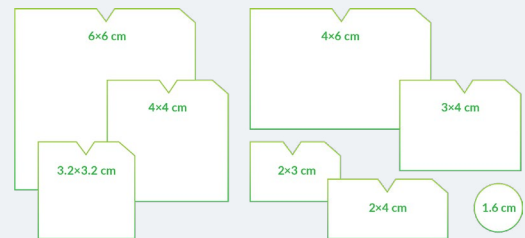
†Vancomycin and gentamicin are used during tissue processing. Caution should be exercised on patients with known sensitivity or allergies to these or any of the processing agents listed in the Information for Use.

Application⁴

- Maintain the orientation of the product; the chorion layer is visible in the package and this layer will be placed onto the wound
- Using aseptic technique, remove NuShield from the package; the product may be trimmed if necessary
- The chorion layer is placed on the wound bed, while the epithelial side should be facing up
- Assure NuShield is in intimate contact with the wound bed; the product can be hydrated once placed on the wound bed
- Anchor NuShield using preferred fixation method then cover NuShield with a primary non-adherent dressing
- Apply secondary dressings specific to the wound type over the non-adherent layer, which should remain in place for up to one week.

Size and storage^{4*}

- Available in a wide range of shapes and sizes
- Maintain at ambient temperature prior to patient application
- Do not freeze
- May be stored for up to 5 years at room temperature.



*See the full Instructions for Use for complete storage and handling instructions.

Reimbursement¹⁰



- 100% of Medicare contractors cover NuShield for VLUs and DFUs⁸
- NuShield has broad Medicare coverage for other wound types when medically appropriate^{7*}
- Coverage should be verified prior to treatment through our Benefit Verification Program.

NuShield billing	Q4160
CPT codes	15271-15278

*Consult with your LCD (local coverage determination) for the specific wound types covered.

VLU = venous leg ulcer; DFU=diabetic foot ulcer.



Support programs and resources

1-888-432-5232

1. McQuilling JP, et al. Int Wound J. 2019;16(3):827-840. 2. Niknejad H, et al. Eur Cells Mater. 2008;15:88-99. 3. Data on File. Description of BioLoc Process. Organogenesis Inc. 4. NuShield Allograft Tissue Information and Instructions for Use. Canton, MA: Organogenesis Inc; 2019. 5. McQuilling JP, et al. Wound Repair Regen. 2019;27(6):609-621. 6. Data on file. DR-0004. Organogenesis Inc. 7. Data on File. Organogenesis Inc.